



Datenblatt - Fiche technique - Data sheet

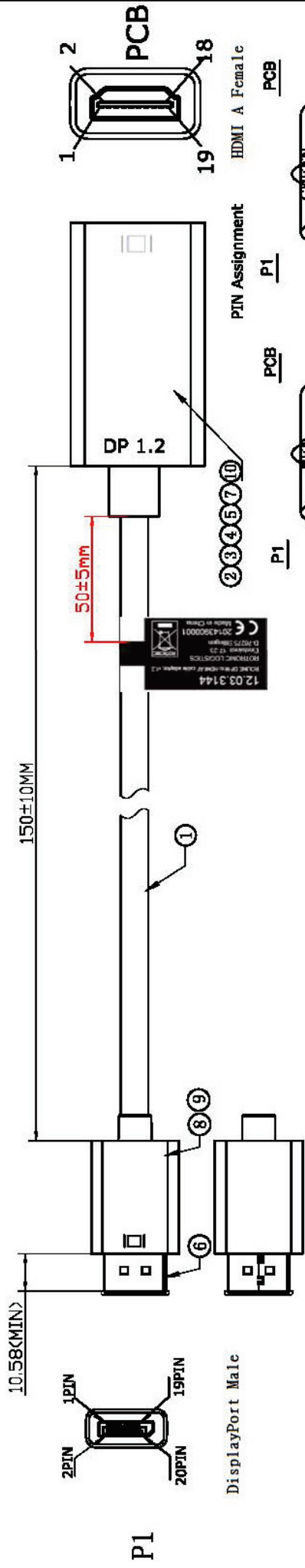
**12.03.3144**



ROLINE DisplayPort-HDMI Adapter, v1.2, DP Stecker-HDMI Buchse

ROLINE Adaptateur DisplayPort - HDMI, v1.2, DP M-HDMI F

ROLINE DisplayPort-HDMI Adapter, v1.2, DP M - HDMI F



DisplayPort Male

DP 1.2

HDMI A Female

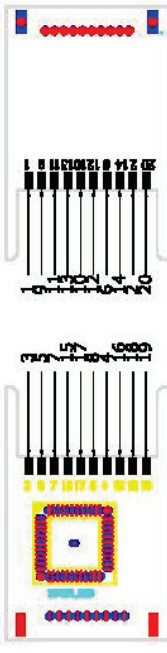
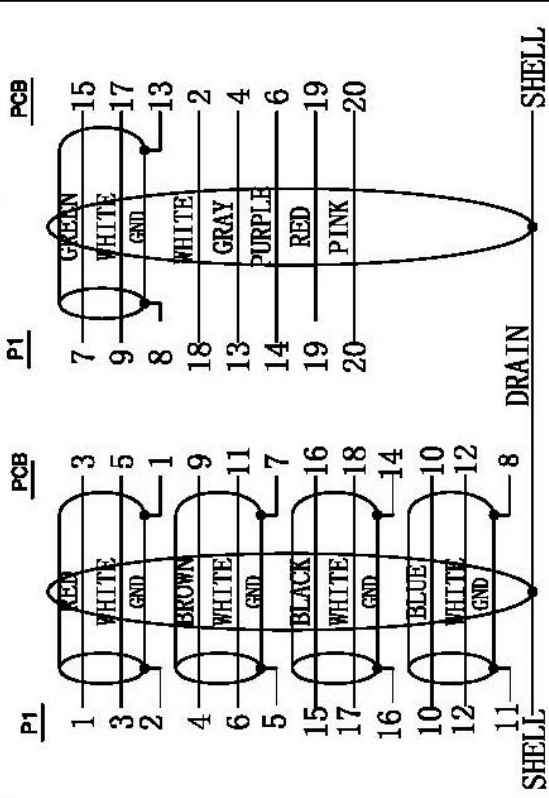
PCB

PCB

PCB

PCB

PCB



- ELECTRICAL TEST:**
1. 100% OPEN SHORT & MIS WIRE TEST
  2. CONTACT RESISTANCE: 2 OHM (MAX.)
  3. INSULATION RESISTANCE: 10M OHM (MIN.)
  4. HI-POT TEST: DC 300V/10ms

10	W=20MM 25u DOUBLE CONDUCTIVE COPPER FOIL	0.02	m
9	DP M (DP M/HDMI A F PCB) ABS One-piece SHELL WHITE PRINT: □ (PT:COOL GRAY 8C W:5.0MM)	1	pcs
8	DP M (DP M/HDMI A F PCB) ABS WHITE	1	pcs
7	φ 0.8 heat shrinkable TUBE 6mm*5pcs	0.03	m
6	DisplayPort M TRANSPARENT COLOR PVC DUST COVER	1	pcs
5	HDMI A F ABS One-piece SHELL Apple SNOWY WHITE	1	pcs
4	HDMI A F ABS One-piece WHITE PRINT: DP 1.2 (neutral)	1	pcs
3	65P SNOWY WHITE PVC	9	g
2	empty PCB + SMT + PLATED: NICKEL	1	pcs
1	DP M TO M SNOWY WHITE PLATED: NICKEL 34AWG AL 0.4M 5 Pair twist	1/2	pcs
NC	DESCRIPTION	QTY	UNIT

**rotronic**

ROLINE Cable Adapter, DP M to HDMI A F  
white color, v1.2

Item No.:	12.03.3144
SCALE	NONE
UNIT	MM
DATE	2014.02.27
DRAWN BY	zhou
CHECK BY	
APPD BY	
DRAWING NO.:	
REV.	A
	1/3